



SHREEJI ENGINEERS

ISO 9001:2015 Certified Company

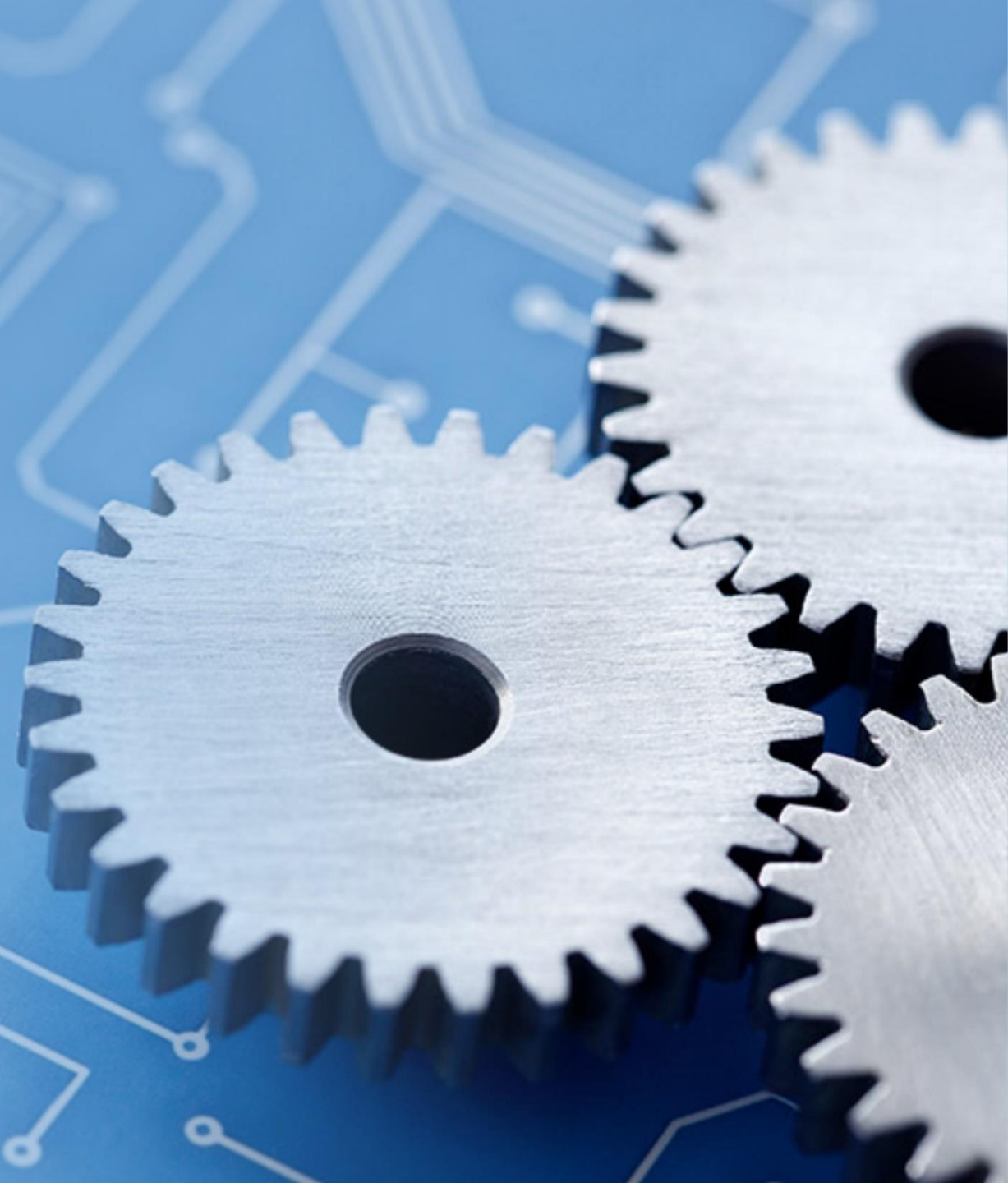
The company was established in year - 1998.

We are manufacturing precision engineering job works through conventional and unconventional machines.



ABOUT US...

- We have experience of more than 27 years in manufacturing of machined part from various materials.
- We have expert technical engineers and skilled staff for taking up the development and manufacture of the new parts.
- We Have expertise of Helicoil fitting of different sizes.
- We motivate our employees/workers for better and quality work with improved efficiency.
- We also have experience to develop part from Aluminum alloy, MS, Brass, Bronze, Teflon, Dairlin, etc.



VISION

At **Shreeji Engineers**, we aim to provide the most effective business solutions in terms of competitive prices for various products, including Quality, Delivery & Services. A combination that would help us to serve the requirements of our clients.

MISSION

Shreeji Engineers mission is to grow globally and develop long term relations with its customer where we can supply material of utmost excellent quality and in time delivery. Cooperation between our company and vendors help us achieve this goal.



QUALITY POLICY

- Shreeji Engineers has adopted quality policy with a view to maintain and improve the quality and endeavor with eco-friendliness.
- We are manufacturers and supplies the machined components, assemblies on time, which completely meets the customer's specifications.
- It will be our endeavor to continue the improvement of every processes and ensure eco-friendliness of operations.



PRODUCTION FACILITIES

Machine	Size
4 - VMC Machines	1200*600*600 (mm) with 4 th axis Centre Height – 200 mm
2 - CNC TURNING CENTER	CHUCK SIZE-200 mm, TURNING DIA.-250 mm, TURNING LENGTH-450 mm
NOAH WIRECUT	500 * 400 * 400 mm
LASERCUT MACHINE	6000 * 2000 mm
LATHE	Centre height-12 inch Length-10 feet
LATHE	Centre height-8 inch Length-6 feet
RADIAL DRILL	1 inch
PILLAR DRILL (2)	½ & ¾ inch

ORGANISATION STRUCTURE

Dhanjibhai Vasoya
(Mo.: 9898610313)

**Planning,
Purchase & Development**

Sahil Vasoya
(Mo.: 9998893998)

**Production,
Quality & Supervisor**



PRODUCT RANGE



END SHIELD



PRODUCT RANGE



Primary Flange



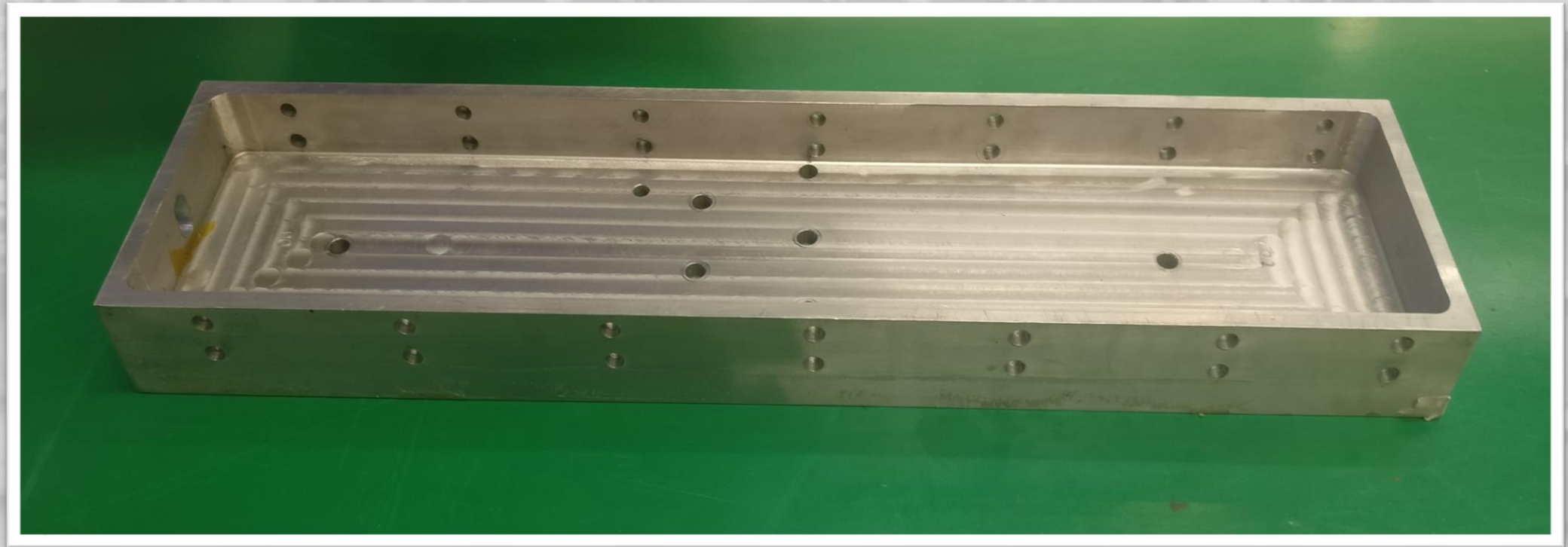
PRODUCT RANGE



Teflon Roller



PRODUCT RANGE



Main Plate



PRODUCT RANGE



Impeller



Shaft



PRODUCT RANGE



S S Nozzle



Inconel Part



PRODUCT RANGE



M S Part



PRODUCT RANGE



AL. CONNECTOR



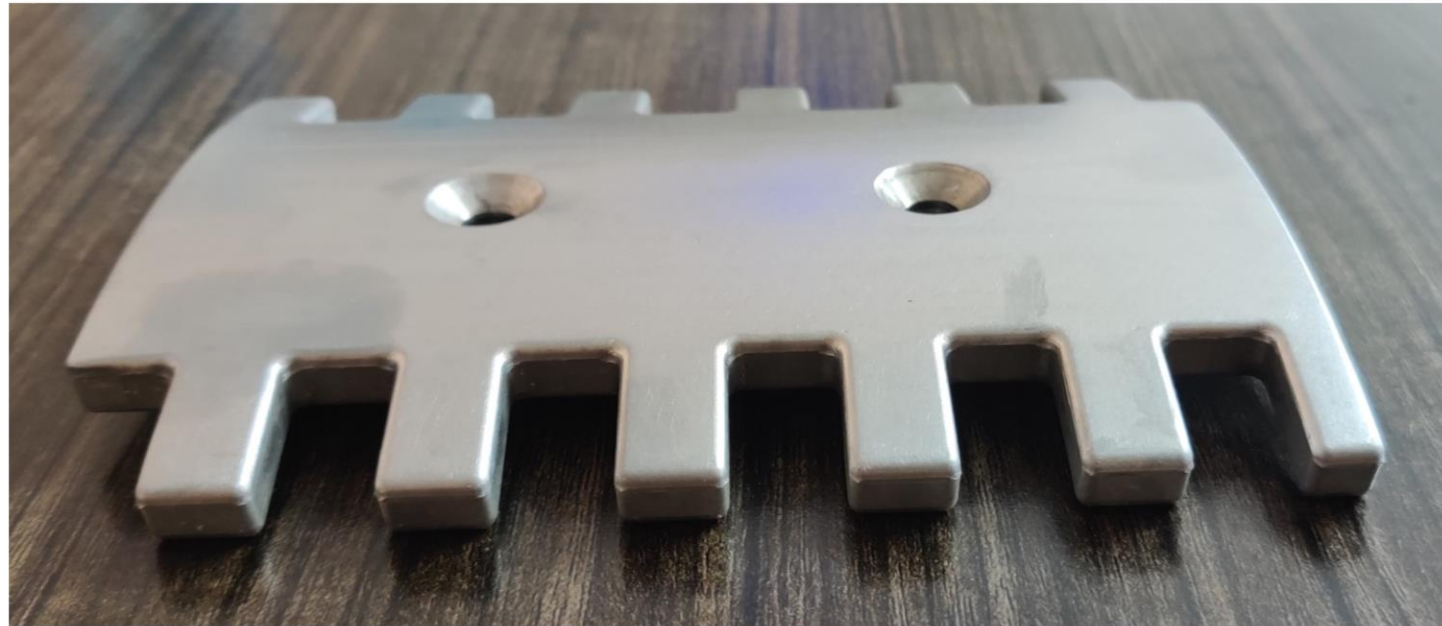
PRODUCT RANGE



Tube Sheet with Internal Grooving (Size : $OD \leq 615$ mm)



PRODUCT RANGE



AL. Finger Plate



PRODUCT RANGE



AL. T-Connector



AL. Landing Gear Mount



PRODUCT RANGE



AL. Part



PRODUCT RANGE



AL. Spider Block



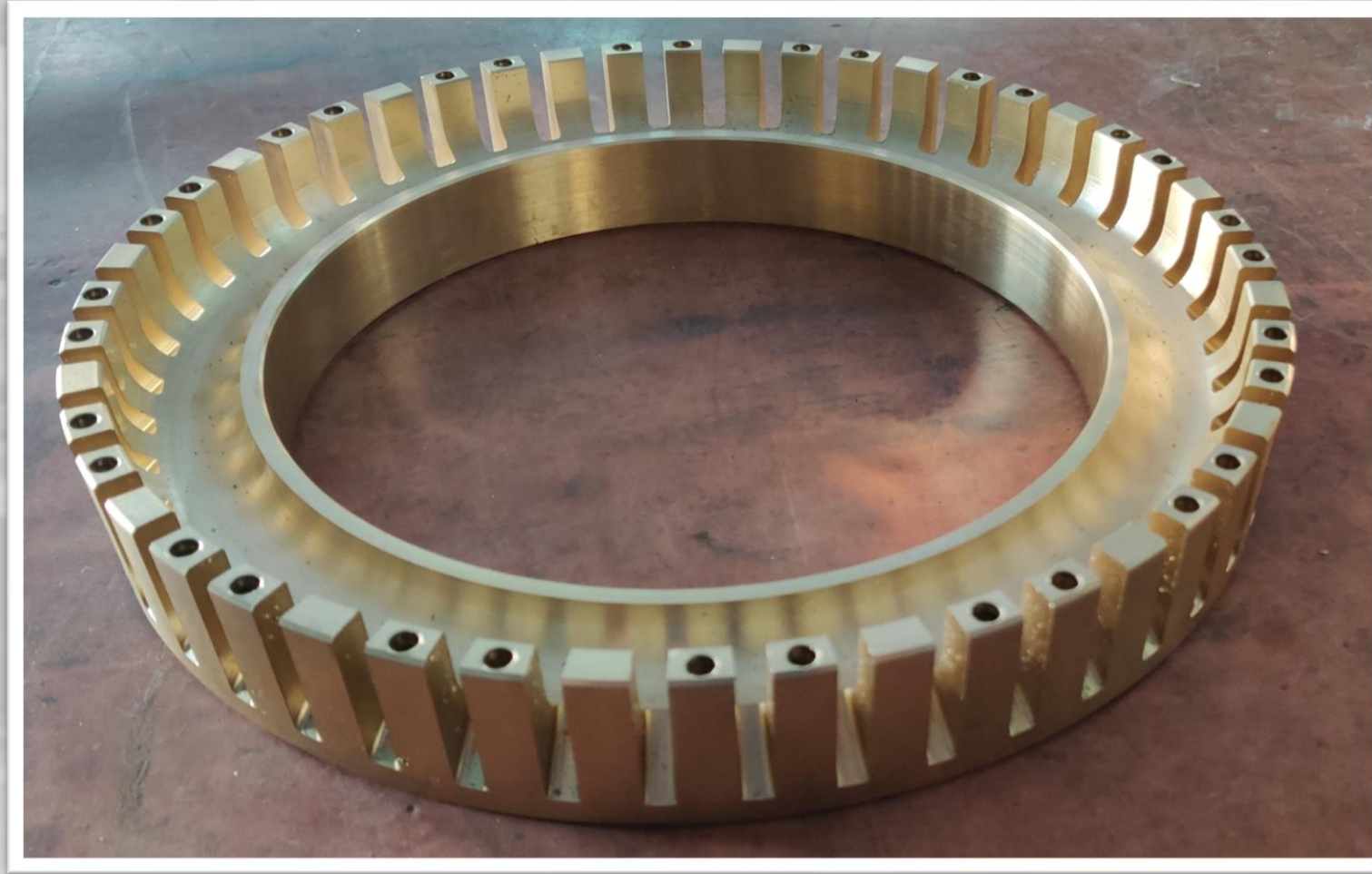
PRODUCT RANGE



M S Latch



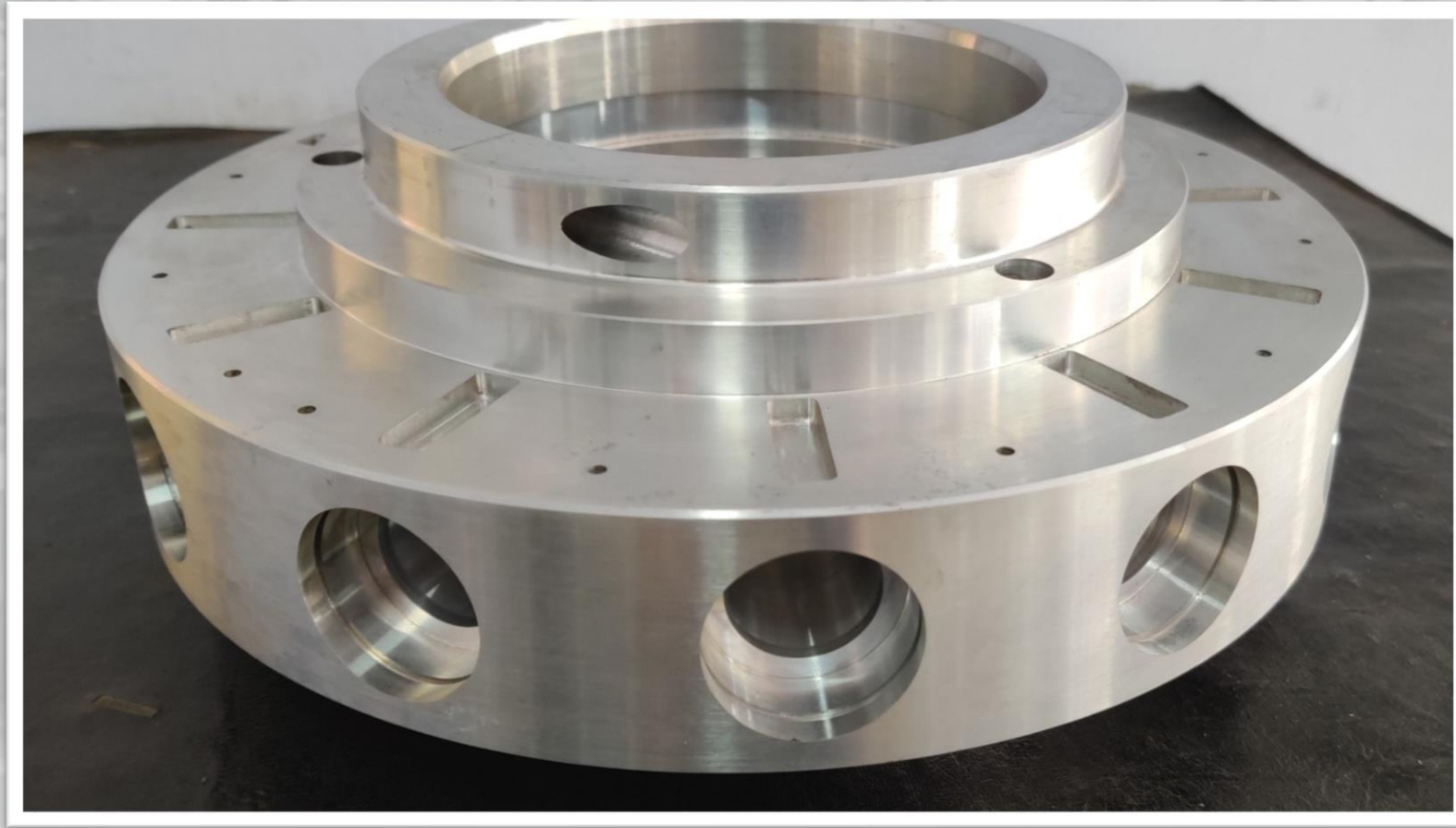
PRODUCT RANGE



Bronze Ring



PRODUCT RANGE



AL. Centre Deck



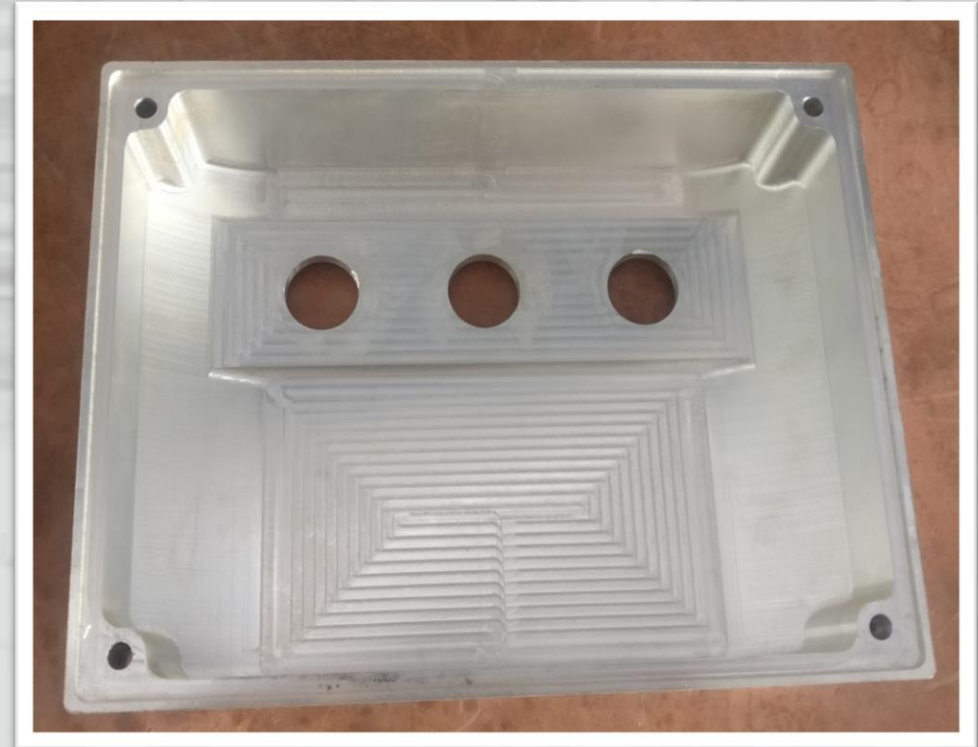
PRODUCT RANGE



Tapered Block with Angle slot



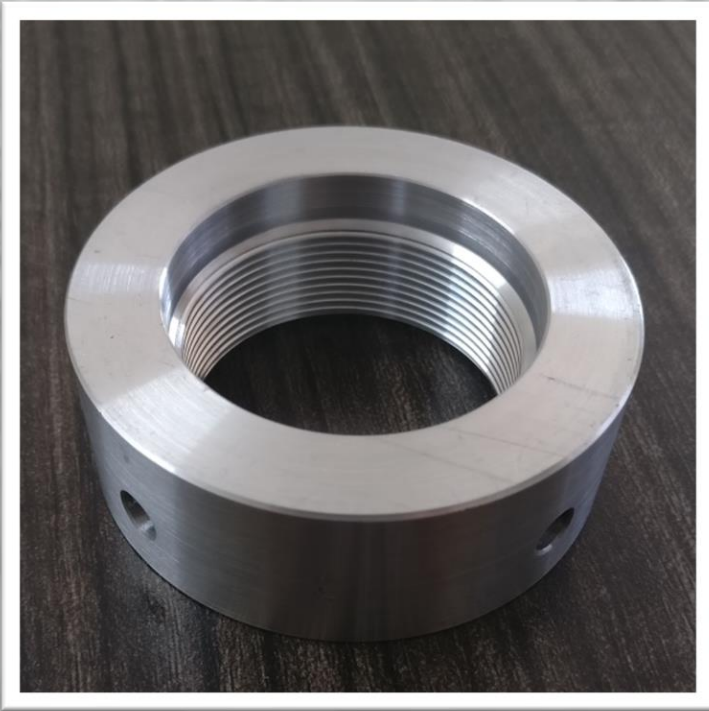
PRODUCT RANGE



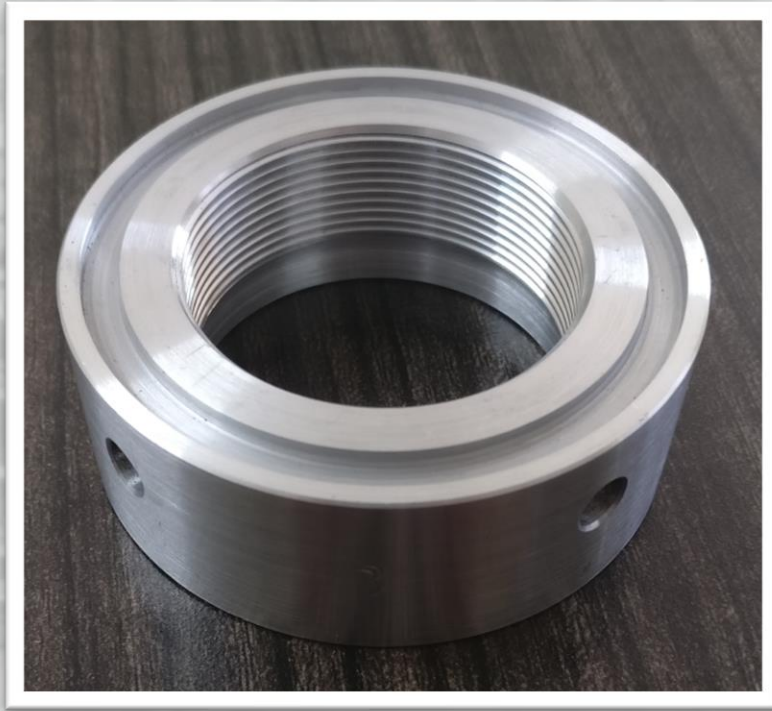
AL. Cover



PRODUCT RANGE



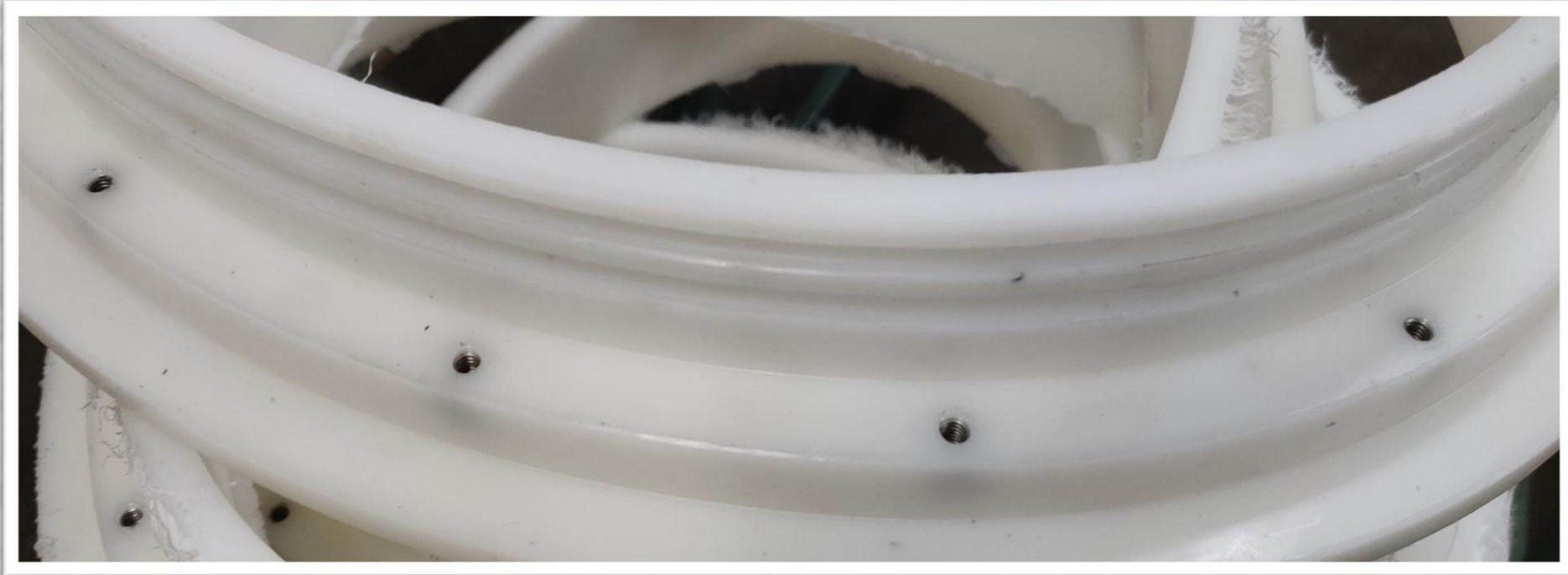
Top Nut



Adjusting Tube



PRODUCT RANGE



Helicoil Fitting M4 To M20

OUR PATRONS

1. Hitachi Energy India Ltd. , Vadodara – India
2. Paras Defense And Space Technologies Pvt. Ltd., Mumbai – India
3. Aditya Birla Power Composites Ltd., Vadodara – India
4. Yash High Voltage , Vadodara – India
5. Ideaforge Technologies, Mumbai – India
6. Columbia Machines Pvt. Ltd. , Vadodara – India
7. Standard Radiators Pvt. Ltd. , Vadodara – India
8. Narayan Energy Pvt. ltd, Vadodara – India
9. Defspace Technologies, Mumbai – India
10. Nextleap Aeronautics, Bangalore – India
11. LISEGA India Pvt. Ltd., Vadodara – India
12. Griportho surgical Pvt. Ltd., Vadodara – India
13. Om Suntronics Pvt. Ltd., Vadodara – India
14. Smooth Flow meters, Mumbai – India
15. KalpvruX Converting Equipment Pvt. Ltd. , Vadodara – India
16. Rotex Automation India, Vadodara - India

Safety, Health & Environment Policy

We are committed to:

- Take actions on a continuous basis in order to create conditions at our workplace, which will prevent accidents and illness, thereby effectively integrating safety in all our business areas.
- Provide a safe and healthy working environment and operate in a manner that will safeguard all employees and protect the environment and natural resources. Also, build in a system to use to the extent possible material/s, water etc. by recycling.
- Identify hazards, assess and control risk to safety, health and environment to which employees and others may be exposed.
- Prevent / Minimize pollution.
- Occupational illnesses and safety risks through continuous improvements in process and practices, effective risk management and mitigation Investigate workplace accidents and illnesses in order to promptly correct any unsafe conditions or practices.



STATUTORY DETAIL

- **TIN No.(vat)** : 24191601996
- **GSTIN No.** : 24AAQFS8144K1ZM ,
Dt. 01-07-2017
- **PAN No.** : AAQFS8144K
- **SSI Registration No.** : 24-019-11-00748

Address:- 780/C-1, GIDC, MAKARPURA,
VADODARA, GUJARAT- INDIA.



**SHREEJI
ENGINEERS**

Thank you

